

MYLER BITS and the Dressage Biting Rule Changes

A huge step forward in biting

The FEI and British Dressage recently added a number of Myler Ported Snaffles; Myler Bradoons; and the Myler Weymouth to their list of permitted bits

These changes are immense in terms of the advance in horse welfare and performance.

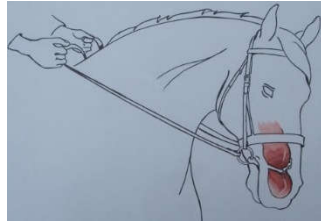
They are unprecedented in that a specific brand of bit has been named in the rules for the first time.

Myler Bits were invented by 3 American brothers looking for a kinder and more effective way of communicating with horses.

The primary action of the bit is onto the horse's tongue.



Typical Angle of Pull, approx..
30-40° above mouth



The Tongue is pulled back into the bottom jaw. Fixed cheek bits will also rotate downwards slightly due to the angle of pull



The Tongue fills the entire mouth cavity, there is no 'extra' space for the bit



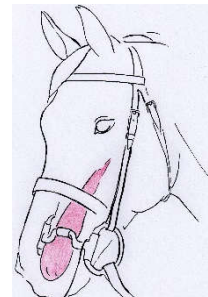
X-Ray shows action of bit on tongue, pulling it away from palate and into bottom jaw

The Tongue

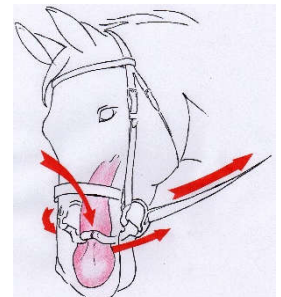
The tongue is one of the most sensitive parts of the body. It is connected directly to both the sternum; the shoulder; & the TMJ (the nerve centre governing the horse's balance and coordination.) Tension in the tongue therefore has a direct impact on the horse's ability to move freely and well. The tongue is also integral to swallowing. Inhibition of the swallowing reflex will create both physical and mental tension, leading to resistance to the bit and the horse being distracted from its rider.

Why Ported Bits?

An un-engaged port lies flat against the tongue. When the rider takes up a contact on a fixed-cheek bit, the angle of pull rotates the bit forwards and down, moving the port away from the tongue, creating space for it to swallow. Forward-tilted ports will give tongue room even with no contact.



Port with no contact



activated port rotates to give tongue relief

Bit Resistance - what is happening and why?

Above the Bit

He is changing the angle of pull, so the pressure is less on his tongue and more into the corners of his lips

Behind the Bit

No rider wants their horse in this position, so they give with their hands, and the horse has reduced the pressure on his tongue

Overactive mouth; Crossed Jaw; Tongue Over Bit or Outside Mouth

The horse is moving the tongue away from the pressure, so that more pressure goes onto his bars

Leaning or Running Through the Bit

The horse has reduced the pressure on his tongue by changing the angle of pull, causing the bit to pull into the corners of his lips

Pulling the Tongue Back into the Throat

To release the pressure on his tongue, the horse pulls it up inside his mouth towards the top of his throat. This pushes the epiglottis back, reducing airflow to the lungs

RESISTANCE TO THE BIT SHOWS YOUR HORSE WOULD RATHER YOU PULLED ONTO HIS LIPS OR BARS, OR EVEN INTERFERE WITH HIS BREATHING, RATHER THAN RESTRICT HIS TONGUE AND HIS ABILITY TO SWALLOW.

USE OF A RESTRICTIVE NOSEBAND, EG A FLASH OR GRACKLE, DOES NOT SOLVE THE PROBLEM, IT MERELY FORCES THE HORSES'S MOUTH TO CLOSE AROUND AN UNCOMFORTABLE BIT, CAUSING MORE TENSION.

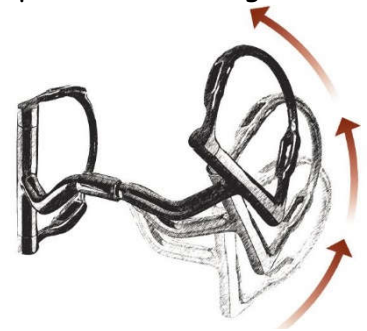
A TENSE HORSE CANNOT MOVE FREELY OR CONCENTRATE ON WHAT HIS RIDER IS ASKING HIM.

Advantages of Myler Bits

Myler mouthpieces are all very forward-curved to give the tongue space to swallow and to meet the outside of the bars and lips at a more sympathetic angle. A centre barrel restricts the degree of collapse, giving jointed bits a wrapping action instead of working like a nutcracker and pinching the bars and lips like a regular snaffle or French Link/Lozenge bit. The barrel also protects the tongue from being pinched or caught in the joint.

The barrel also gives Independent Side Movement, which allows the rider to give a much clearer lateral aid to the horse.

Ported snaffles allow the horse more tongue room for comfort & swallowing. The Myler System also offers a much better choice of different bits to suit different horses with different temperaments and at different stages in their training.



Independent Side Movement (ISM)

Myler Training Levels

We do not communicate and interact with a small child in the same way we do with a teenager, or indeed another adult, - so why should we use the same communication tool throughout our horse's training?

The Mylers' approach is gradually to allow a horse more tongue freedom as he progresses through his training, rather like allowing a child more and more responsibility. By paying attention to the changes in his understanding and biting needs, we can ensure the bit is always an effective communication tool, rather than a barrier to communication and the cause of resistance.

Choosing the Right Bit

Early in the horse's training, the rider is asking for basic balance and obedience, (eg. trot to walk, walk to halt, basic turning, etc.). Few of the rider's body aids are understood at this stage, and the choice of bit is particularly important to prevent lasting damage to the mouth and to avoid triggering a cycle of resistance. Riders can use the sensitivity of the tongue to give clear signals, concentrated in the centre, which can be released quickly and evenly when the horse does as he is asked.

As the horse progresses in a particular discipline, with a degree of balance and collection, he should be relaxed, with a clear top line and will be able to hold his outline when rein pressure is released. He will be stronger and able to sustain longer periods of work with better concentration and understanding.

At this stage the rider wants to refine and define his aids for more precise work. The tongue may still be used for signalling and control, but with a more subtle, spread pressure. It is still too early to release the tongue completely but a bit with a small port can be chosen to give more tongue relief. The bars, curb and poll may also be utilised to a certain extent. Independent Side Movement becomes more important as the work becomes increasingly complex with the use of more lateral aids.

Once a high degree of collection and athleticism is being achieved, the horse should be relaxed and working well off the rider's seat, leg and hand. The mouthpiece can now give maximum tongue relief, although the appropriate bit will depend very much on the horse's disposition.

As a rule, the calmer the mind of the horse, the more tongue freedom you can give him.

MB04 MYLER LOW PORT COMFORT SNAFFLE **(supersedes the MB02 Comfort Snaffle)**

- Small, $\frac{3}{4}$ " port for tongue relief. Wrapping action (no pinch or nutcracker). Independent Side Movement
- Acts on tongue & corners of bars, gently wrapping lips. Encourages horse to bend, balance & relax at the poll
- Ideal for a young horse, encouraging him to move with the bit as it wraps the outer lip



View from the back of the bit (next to the tongue), showing the tongue room given by the port



View from above the bit, showing the forward sweep of the mouthpiece for tongue room

Dressage Legal Cheeks & Sizes

| | | |
|----------------------|-------------------|---------|
| Loose Ring, 2804: | 5"; 5½"; 6", | RRP £79 |
| Eggbutt, 2904: | 5"; 5½", | RRP £94 |
| Hanging Cheek, 4104: | 4½"; 5"; 5½"; 6", | RRP £94 |



Other Cheeks & Sizes

| | | | |
|-----------------------------|-------------------|----------|-------------------|
| Full Cheek with hook, 2404: | 5"; 5½", | RRP £77 | while stocks last |
| Kimblewick, 25045: | 5", | RRP £112 | |
| Pelham, 2604: | 4½"; 5"; 5½", | RRP £129 | |
| Eggbutt with hooks, 3004: | 5"; 5½"; 6", | RRP £104 | |
| Myler Combination, 3104: | 4½"; 5"; 5½"; 6", | RRP £154 | |

MB06 MYLER LOW PORT MULLEN BARREL **(supersedes the MB32 Mullen Barrel)**

- Non-collapsing version of MB04, with $\frac{3}{4}$ " port and Independent Side Movement
- With no wrapping action, the bit gives more feel directly onto the lips and bars and the signal is a little quicker
- Suited to horses who react better to a solid-action, non-collapsing bit



View from the back of the bit (next to the tongue), showing the tongue room given by the port



View from above, showing the forward sweep of the mouthpiece for tongue room

Dressage Legal Cheeks & Sizes

| | | |
|----------------------|-------------------|---------|
| Eggbutt, 2906: | 5"; 5½", | RRP £94 |
| Hanging Cheek, 4106: | 4½"; 5"; 5½"; 6", | RRP £98 |



Other Cheeks & Sizes

| | | |
|---------------------------|---------------|----------|
| Pelham, 2606: | 4½"; 5"; 5½", | RRP £122 |
| Eggbutt with hooks, 3006: | 5"; 5½", | RRP £107 |
| Myler Combination, 3106: | 5"; 5½", | RRP £120 |

MB36 MYLER FORWARD-TILT PORTED BARREL

- Forward-tilted version of MB06. $\frac{3}{4}$ " port angled forward 45°. Independent Side Movement
- Acts on the lips and bars; and on tongue with a strong rein
- Suitable for a horse wanting to be polite but who can still spook or need refocussing. The 36 gives tongue relief when off or on very light contact, but does act on tongue with stronger contact
- Can also be ideal for horses with limited room for port (often Mountain & Moorland; Arabs; Hacks)



View from the back of the bit (next to the tongue), showing the tongue room given by the port



View from above the bit, showing the forward-angled port for tongue room with light or no contact

Dressage Legal Cheeks & Sizes

| | | |
|----------------------|--------------|---------|
| Loose Ring, 2836: | 5"; 5½"; 6", | RRP £84 |
| Hanging Cheek, 4136: | 5"; 5½", | RRP £96 |



Other Cheeks & Sizes

| | | |
|---------------------------|----------|----------|
| Eggbutt with hooks, 3036: | 5"; 5½", | RRP £109 |
|---------------------------|----------|----------|

MB33 MYLER PORTED BARREL

- Large 1½" port, no collapse. Independent Side Movement
- Direct action bit, (no collapse). Full tongue relief, acts on top of bars
- Suitable for really well-mannered, finished horse, working well off all aids



View from the back of the bit (next to the tongue) showing the total tongue relief given by the port



View from above the bit, showing the forward sweep of the mouthpiece for tongue room

Dressage Legal Cheeks & Sizes

| | | |
|----------------------|---------------|---------|
| Hanging Cheek, 4133: | 4½"; 5"; 5½", | RRP £96 |
|----------------------|---------------|---------|

Other Cheeks & Sizes

| | | |
|---------------------------|----------|----------|
| Pelham, 2633: | 5"; 5½", | RRP £134 |
| Eggbutt with hooks, 3033: | 5"; 5½", | RRP £107 |
| Myler Combination, 3133: | 5"; 5½", | RRP £154 |



MB02 MYLER COMFORT SNAFFLE (wide barrel) (being superseded by MB04 Low Port Comfort Snaffle)

- Myler Comfort version of French Link. Independent Side Movement but no Port
- Acts on tongue & corners of bars, gently wrapping lips. No pinch or nutcracker
- Suited to a young horse; learning to bend and balance



View from the back of the bit (next to the tongue)



View from above the bit, showing the forward sweep of the mouthpiece for tongue room

Dressage Legal Cheeks & Sizes

| | | | |
|------------------------------|---------|---------|-------------------|
| Loose Ring, 2802: | 5"; 5½" | RRP £79 | |
| Hanging Cheek, 4102: | 5"; 5½" | RRP £98 | |
| Hanging Cheek, 42023, 41028: | 4½"; 6" | RRP £76 | while stocks last |



Other Cheeks & Sizes

| | | | |
|-------------------------------|---------|----------|-------------------|
| Full Cheek with 1 hook, 24025 | 5"; 5½" | RRP £76 | while stocks last |
| Myler Combination, 33023: | 4½" | RRP £112 | while stocks last |

MB32 MYLER MULLEN BARREL (being superseded by MB06 Low Port Mullen Barrel)

- Generously forward-curved Mullen Mouthpiece. No Port. No Collapse. Independent Side Movement
- Spreads pressure across tongue. With no wrapping action, the bit gives more feel directly onto the lips and bars.
- Suited to horses who react better to a solid-action, non-collapsing bit



View from the back of the bit (next to the tongue)



View from above the bit, showing the forward sweep of the mouthpiece for tongue room

Dressage Legal Cheeks & Sizes

| | | | |
|----------------------|------------------|---------|-------------------|
| Full Cheek, 2332: | 5"; 5½" | RRP £77 | while stocks last |
| Eggbutt, 2932: | 5"; 5½" | RRP £76 | while stocks last |
| Hanging Cheek, 4132: | 4½"; 5"; 5½"; 6" | RRP £77 | while stocks last |



Other Cheeks & Sizes

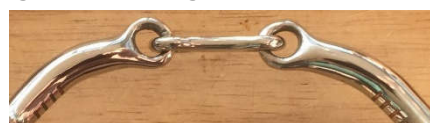
| | | | |
|---------------------------|----|---------|-------------------|
| Eggbutt with hooks, 30325 | 5" | RRP £76 | while stocks last |
|---------------------------|----|---------|-------------------|

MB10 MYLER FRENCH LINK (superseded by MB02 or MB04)

- Generously forward-curved for tongue room. Large link rings to minimise catching
- Acts across tongue, can pinch tongue, lips and bars
- Sweet Iron mouthpiece which will corrode naturally for pleasant taste to encourage acceptance
- Suitable for young horse in early stage of training



View from the back of the bit (next to the tongue)



View from above the bit, showing the forward sweep of the mouthpiece for tongue room

Dressage Legal Cheeks & Sizes

| | | | |
|----------------------|---------|---------|-------------------|
| Loose Ring, 28107: | 5½" | RRP £58 | while stocks last |
| Hanging Cheek, 4110: | 5"; 5½" | RRP £60 | while stocks last |



OTHER MYLER MOUTHPIECES

MB03 COMFORT SNAFFLE with COPPER ROLLER

- Design and Action as MB02, but with copper roller in centre of barrel which helps to calm busy-mouthed horses. Has Independent Side Movement
- Suited to young horse in early stages of training.

Cheeks & Sizes

Full Cheek with hook, 4½" 5", RRP £92 while stocks last



MB05 MEDIUM WIDE PORT COMFORT SNAFFLE

- As 04, but much larger port. Has Independent Side Movement.
- Acts on corners & tops of bars. Wraps lips. Little or no palate/tongue pressure
- Suited to intermediate horses needing more tongue room, often cob or ID type

Cheeks & Sizes

Eggbutt with hooks, 5"; 5½", RRP £92



MB32-3 TRIPLE BARREL

- Curved, jointed mouthpiece with three barrels in centre and ISM.
- Acts on tongue and corners of bars, collapses slightly on bars and restricts tongue. Turns into solid mouthpiece when asking for a stop. Similar tongue room to MB04
- Can suit horses who get heavy in the hand and don't suit a big port.

Cheeks & Sizes

Myler Combination, 5"; 5½", RRP £128



MB 41PB CORRECTIONAL PORTED BARREL

- Curved mouthpiece with upward and forward bend, two hinges and centre piece with barrel for ISM. No restriction in degree of collapse.
- Offers lots of tongue relief to compliant horse but will put downward pressure on top of bars when activated, followed by downward pressure on tongue and inward collapse on bars.
- Can be good for strong horse with head down low or into chest. Encourages horse up into bridle.

Cheeks & Sizes

Pelham, 5"; 5½", RRP £139

Eggbutt with hooks, 5"; 5½", RRP £111



MB43LP LOW PORTED BARREL NARROW

- Solid curved mouthpiece with 1" port with centre barrel for ISM
- Gives lots of tongue room. Does not collapse but will roll down onto tongue when horse's head is too far forward
- Can be good for strong, keen horse who tends to put his head out in front

Cheeks & Sizes

Pelham, 5"; 5½", RRP £134

Eggbutt with hooks, 5"; 5½", RRP £84

Short Shank Combination, 4½" 5"; 5½", RRP £121

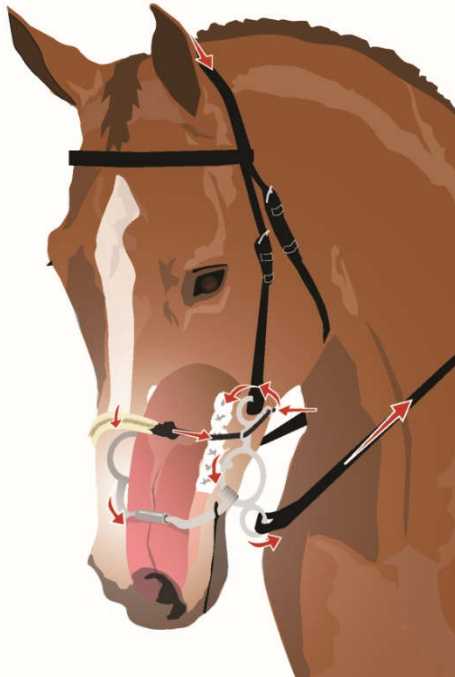
Hanging Cheek, 4½", RRP £81



MYLER COMBINATION BITS

The Myler Combination Bit is one of the kindest bits available. It spreads the rein pressure exerted by the rider over several different areas.

Initially, it acts on the nose; poll and back of the jaw, with the mouthpiece "floating" on a loose ring. The total pressure applied by the rider is shared over these 3 areas. If the rider increases the pull on the reins, the mouthpiece engages, as it moves up against a little 'stop' on the cheek ring and activates on the tongue and bars like a "normal" mouthpiece. At this point, the pressure exerted by the rider is spread over 5 areas - nose; poll; jaw; tongue; and bars, each receiving only 1/5 of the pressure the rider puts into the rein.



Because all pressure areas engage and release at the same time, the horse is offered a pressure-free reward whenever he is light and relaxed at the poll, (providing, of course, that the rider relaxes his hand.) This makes the Myler Combination an excellent training tool, for horses ranging from youngsters to well-schooled campaigners.

It is particularly suitable as the first bit for a young horse, which will be used to head-pressure signals from being led in a head collar. It is also a great bit for horses who are very nervous in the mouth; ex-racehorses who have been trained to "run into their mouths" and are reluctant to come into a good outline; and older horses who think they know it all and will benefit from a very different feel in the communication they receive from the rider.

Many professional event riders find the Myler Combination invaluable to get the horse relaxed and going as softly as possible and working well off the other aids, before they replace it with a permitted bit for their dressage test.

The pressure exerted on the horse's nose, jaw and poll are extremely effective at getting the horse to relax at the poll; flex his neck from the withers; & move in an uphill, rounded outline.

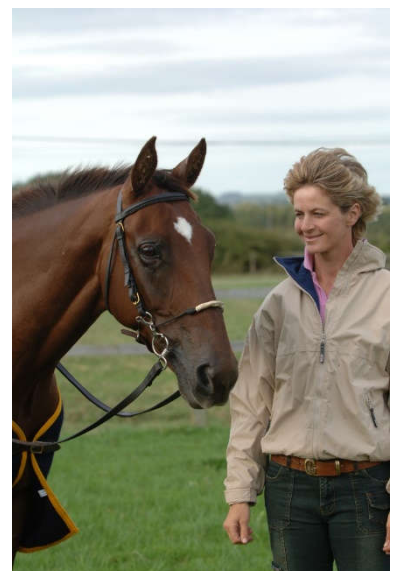
The Myler Combination Bit is available in several different mouthpieces and with 2 rein options on the shank. All Myler Combination Bit mouthpieces are made from Sweet Iron which will corrode gradually over time giving a sweet taste that will encourage salivation.

Available in the following mouthpieces

MB02 4½" only MB04: 4½"; 5"; 5½"; 6"

MB06 5"; 5½" MB33 5"; 5½"

MB32-3 triple barrel, 5"; 5½" while stocks last

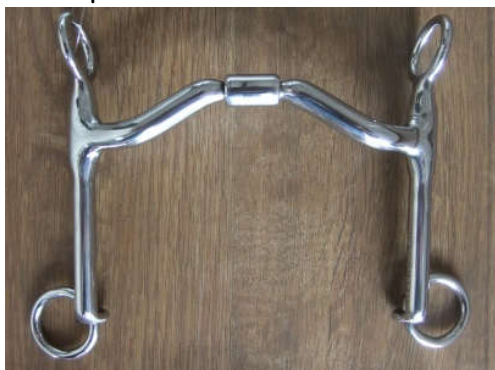


MYLER DOUBLE BRIDLE BITS

The FEI and British Dressage now allow the following Myler Double Bridle Bits

The Myler Weymouth

The principle which has been accepted is Myler's special Independent Side Movement on a Weymouth mouthpiece.



The Myler Weymouth is available with a range of ports.

Bradoons

- MB02 Myler Comfort Snaffle
- MB04 Myler Low Port Comfort Snaffle
- MB06 Myler Low Port Mullen Barrel
- MB32 Myler Mullen Barrel
- MB36 Myler Forward-Tilt Ported Barrel

A production range of Myler Double Bridle Bits is now in development and will be available from Shaws Equestrian in 2018.

They are currently only available custom-made from Myler Bits USA.

Sales: mylerbitsusa@mylerbitsusa.com

Information & Support: rmyler15578@mylerbitsusa.com

Telephone: 001 417-859-0177

There is a wealth of information on biting in general and on Myler Bits in particular on our website:
www.shawsequestrian.com

For more details on anything in this brochure; biting advice; or information on any of our products, please contact:

Shaws Equestrian

T: 01335 370737

E: info@shawsequestrian.com